



//Opus Interactive Tier III Portland Data Center

Mission Critical?
We Own That.

Unique Requirements
Let's Make It Happen.

Starting Small...Big Plans?
Exciting! Love to Help.

Technology, meet humanity.

The Portland BB1 (Brewery Blocks 1) data center was purposely built by its previous owner, Tycom to serve as an endpoint for its high-capacity, undersea fiber cable linking the US with Asia. Considered to be critical National communications infrastructure, it's a TIA942 Certified facility, designed to remain online and operational in multitudes of potential adverse events. With its 2N and N+1 redundancy throughout, 8MW of Power, 4,000 Ton cooling capacity, and ample available space BB1 is built to be open for business.

Opus Interactive offers the following services and capabilities from the BB1 data center.

In short, *it's built to last.*

- Tier III / TIA942 Certified
- 8MW Capacity
- AC and DC Power
- 80,000SF Total Space
- Pittock Exchange via Dark Fiber
- Asia-USA Fiber Endpoint
- 19 Service Providers
- Colocation Suites and Cages
- Comprehensive Managed Services
- Private Managed Cloud
- Metro Ethernet
- Meet-me-Room





//Opus Interactive Tier III Portland Data Center

BUILDING

Construction

- 2002 Construction
- Zone 4 Seismic Reinforcement
- LEED® Silver Certification

Convenience

- Full size Loading Dock with Dock Leveler
- Large Freight Elevator with 7,000Lb Capacity
- Customer Parking in Adjoining Garage



ENVIRONMENTAL

Cooling

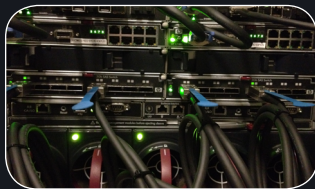
- Central Chilled Water Supply
- 4,000 Ton Central Cooling Plant
- Dual City Water Feeds N+1
- 24 CRAC Units Configured N+1 or Greater
- Raychem Leak Detection

Fire Detection & Suppression

- VESDA Smoke Detection System
- Inergen Inert Gas Fire Suppression System
- Pre-Action Sprinkler System

Physical Security

- ID Card Authentication Access Control
- CCTV System with 90 Day Recording Retention
- Biometrics Available to Cages/Suites



POWER SYSTEM

Utility Power

- Diverse, Dual Utility Valves
- 2x - 12.47KV Feeds From PGE High-Availability Grids
- 4x - 2.5MW Transformers in 2N Configuration
- Permanently Installed Load Banks

Standby Power Generation

- 3x - Paralleled 2.25MW Diesel Generators
- All Infrastructure in Place for 4th Generator
- Load Tested Quarterly

Fuel Tanks

- 28,000 Gallons of On-Site Diesel
- Multi-Vendor, Priority Refueling Contracts

AC UPS

- A/B UPS Plants Each With 3x - 750KW UPS N+1
- All Switch Gear in Place for C/D UPS Plants

DC Plant

- A/B Plants Supplying 585KV Amps N+1

CONNECTIVITY

- Diverse Path Fiber Entrances and Risers
- Basement Meet-Me-Room with Fiber Risers
- NWAX + SIX Blended Internet Feed
- Long Haul Transport Circuits to Westin Building (No Dependency on Pittock)
- Metro Ethernet (Optical and Copper)
- Short Hop/Low Latency IP to Asia



AVAILABLE NETWORK SERVICE PROVIDERS

- | | | |
|---|---|---|
| <ul style="list-style-type: none"> • AT&T • Abovenet • ACS Alaska* • Cogent* • Comcast* • Global Crossing • he.net | <ul style="list-style-type: none"> • Integra Telecom • Level 3 • LS Networks* • PAETEC (Windstream)* • Qwest/Centurylink • SilverStar Telecom* • Verizon Business* | <ul style="list-style-type: none"> • Spectrum Networks* • TATA • TW Telecom • XO • Zayo (360 Networks) |
|---|---|---|

**Available via Opus Interactive transport, wavelengths, or dark fiber to Pittock Internet Exchange*

Call 503.972.6677 to learn more.